

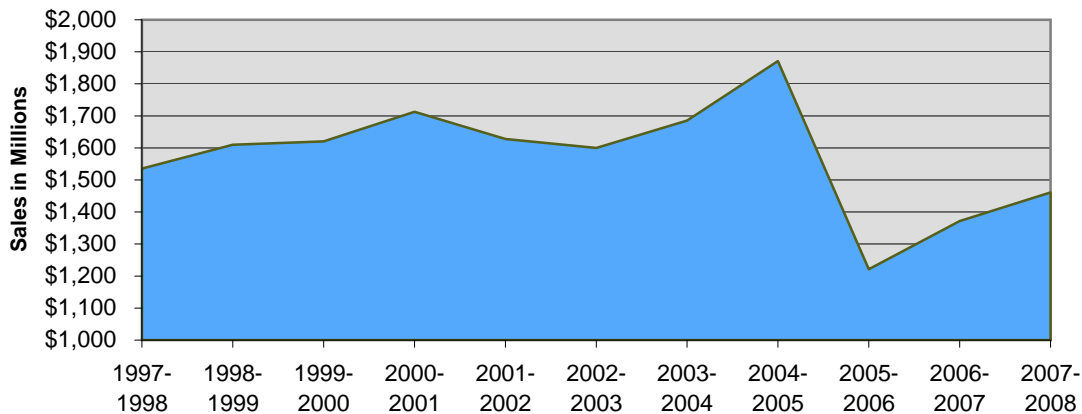
Alamance County Retail Sales



Retail Sales Trends

Fiscal Year	Total Sales	Annual Growth
2000-2001	\$1,712,541,862	5.7%
2001-2002	\$1,628,026,658	-4.9%
2002-2003	\$1,599,675,866	-1.7%
2003-2004	\$1,685,160,395	5.3%
2004-2005	\$1,870,885,272	11.0%
2005-2006	\$1,221,228,232	-34.7%
2006-2007	\$1,371,732,692	12.3%
2007-2008	\$1,460,915,191	6.5%

Alamance County Retail Sales



*Starting with the 2005-2006 fiscal year, sales and use tax report is not comparable to previous fiscal year reports. In Fiscal Year 2005-06 the Streamlined Sales Tax Agreement required a change in the Sales & Use Tax return so that not all taxpayers reported gross retail sales. Beginning with the report for Fiscal Year 2005-06, we reported only gross collections and taxable sales.

Current Year Sales

Fiscal Year 2007-08	Burlington	Elon	Graham	Mebane	Alamance County Total
July	\$92,222,995	\$1,709,914	\$7,804,767	\$20,092,869	\$133,390,793
August	\$87,117,898	\$928,203	\$7,215,935	\$15,843,369	\$122,409,344
September	\$89,216,178	\$1,276,727	\$6,575,506	\$14,343,437	\$125,441,889
October	\$80,487,144	\$1,534,916	\$8,632,932	\$22,967,883	\$124,963,953
November	\$78,258,615	\$1,072,473	\$7,777,464	\$11,532,024	\$109,577,394
December	\$66,250,856	\$904,381	\$6,236,905	\$12,479,942	\$89,947,809
January	\$117,329,726	\$891,816	\$8,786,748	\$23,292,908	\$161,443,488
February	\$63,606,503	\$1,018,072	\$6,183,984	\$16,235,547	\$94,059,540
08-09 Year to Date	\$674,489,915	\$9,336,502	\$59,214,241	\$136,787,979	\$961,234,210

Note: Cities with population in excess of 5,000 are reported.



Alamance County Area Chamber of Commerce

610 S. Lexington Avenue ▲ P.O. Box 450 ▲ Burlington, NC 27216

Phone: 336-228-1338 ▲ Fax: 336-228-1330 ▲ www.choosealamancenc.com

Source: North Carolina Department of Revenue
Updated: April 2009