

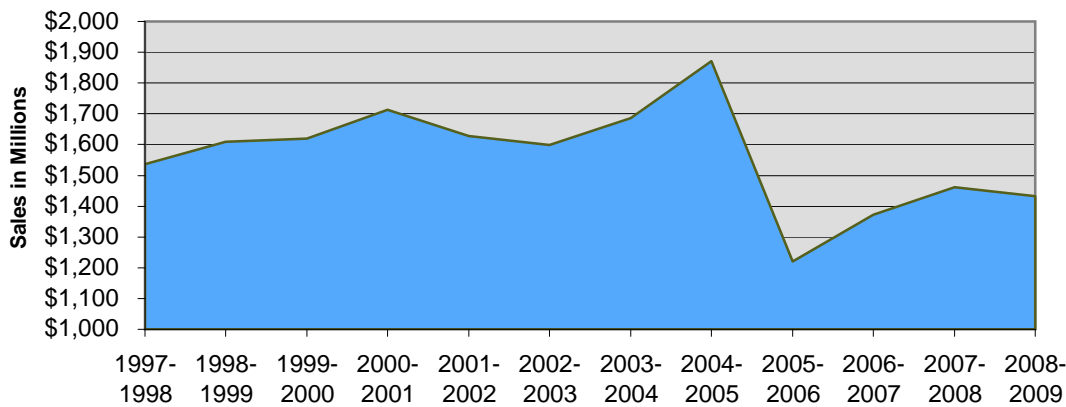
Alamance County Retail Sales



Retail Sales Trends

Fiscal Year	Total Sales	Annual Growth
2000-2001	\$1,712,541,862	5.7%
2001-2002	\$1,628,026,658	-4.9%
2002-2003	\$1,599,675,866	-1.7%
2003-2004	\$1,685,160,395	5.3%
2004-2005	\$1,870,885,272	11.0%
2005-2006	\$1,221,228,232	-34.7%
2006-2007	\$1,371,732,692	12.3%
2007-2008	\$1,460,915,191	6.5%
2008-2009	\$1,431,415,494	-2.0%

Alamance County Retail Sales



**Starting with the 2005-2006 fiscal year, sales and use tax report is not comparable to previous fiscal year reports. In Fiscal Year 2005-06 the Streamlined Sales Tax Agreement required a change in the Sales & Use Tax return so that not all taxpayers reported gross retail sales. Beginning with the report for Fiscal Year 2005-06, we reported only gross collections and taxable sales.*

Current Year Sales

Fiscal Year 2009-10	Alamance County
July	\$116,308,441
August	\$117,145,680
September	\$113,228,763
October	\$128,532,617
09-10 Year to Date	\$475,215,501



Alamance County Area Chamber of Commerce
 610 S. Lexington Avenue ▲ P.O. Box 450 ▲ Burlington, NC 27216
 Phone: 336-228-1338 ▲ Fax: 336-228-1330 ▲ www.choosealamancenc.com

Source: North Carolina
 Department of Revenue
 Updated: May 2010